



Bollo Lane, London, W4 5LX

A very nicely presented spacious two bedroom apartment presented over two floors with the benefit of a large private south facing roof terrace within walking distance to chiswick high road with its array of boutique shops. Restaurants and cafe bars main retailers include M&S , Waitrose,Sainsbury,Tesco and the Co-op. Accommodation provides spacious reception room with gallery, upper kitchen/dining room with glass ballustrade and door to a large decked south facing private terrace,two double bedrooms, fitted bathroom, ample storage. Local transport links include chiswick Park. Gunnesbury & Acton town tube stations with numerous local bus routes and convenient vehicular access via A4/M4 central London , Heathrow & The West. The property is offered as part furnished and available 13th June 2026. EPC - D Ealing Council Tax Bank D

- Spacious duplex maisonette
- Lovely central location
- Galleried reception room
- Kitchen/diner with ballustrade
- Two double bedrooms
- Bathroom
- South facing large terrace
- Offered part furnished
- Available 13th June

£2,600 Per Calendar Month

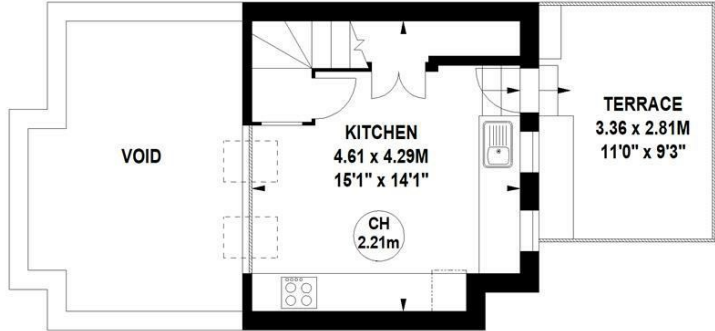
Bollo Lane, W4

Approximate gross internal area

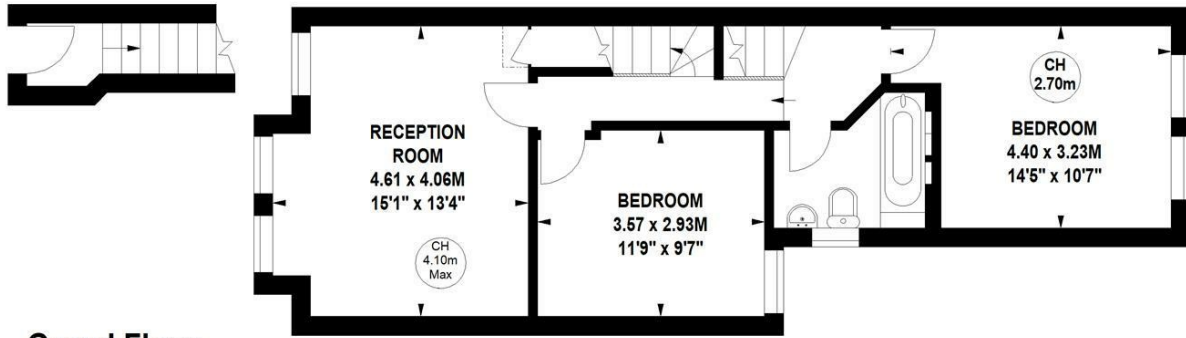
76.92 sq m / 828 sq ft
(Excluding Void)



Key :
CH - Ceiling Height



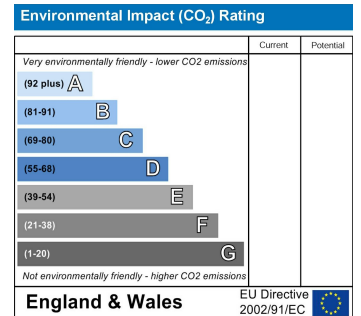
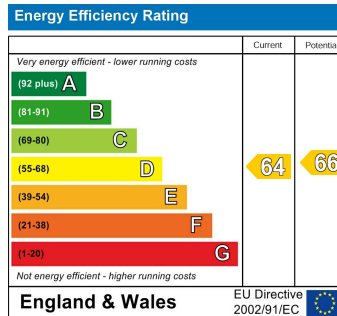
Second Floor



**Ground Floor
Entrance**

First Floor

Not to scale, for guidance only and must not be relied upon as a statement of fact.
All measurements and areas are approximate only



5-7 Turnham Green Terrace, Chiswick, London, W4 1RG

Tel 020 8747 8800

E-mail lettings@whitmanandco.com

Website www.whitmanandco.com